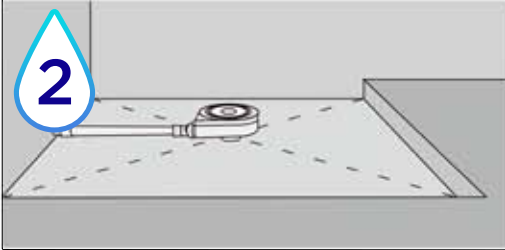
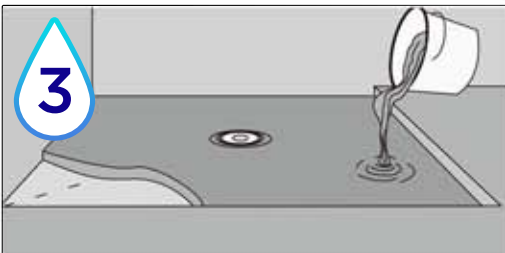


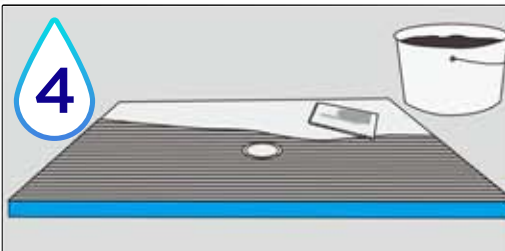
For a new build, reserve a recessed section when casting the floor screed. For an existing floor, mark the location and cut out a channel to receive the drain and piping.



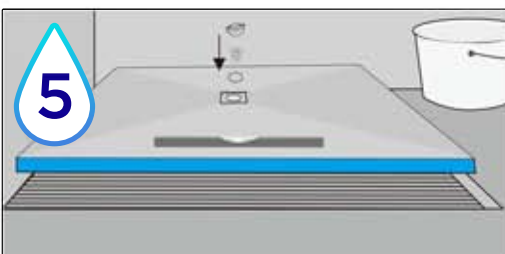
Position the drain body and connect the drain pipe in. Set the height of the drain to marry up with the shower tray. Check for leaks.



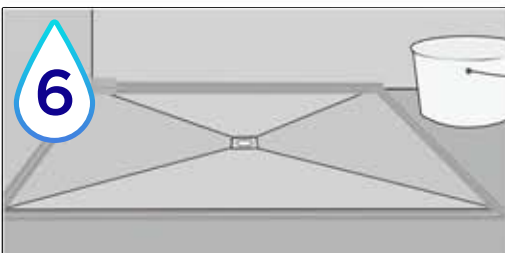
Using screed or Level IT FX bury the piping and make sure the finish is level to the drain body. You may need to weigh the drain down to stop it floating.



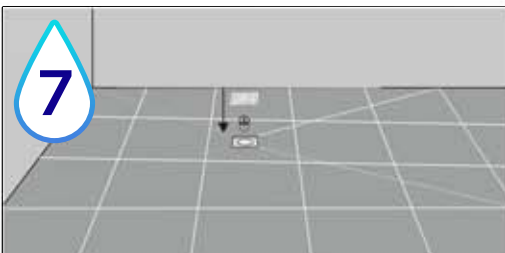
When the surface has set, comb the back of the shower tray and the prepared base with flexible adhesive.



Fix the shower tray onto the floor evenly, put the drain connector inside the drain body and tighten with the drain key.



Tape all the joints between shower tray, wall and floor using Mira Safecoat Roll and Mira Multicoat 4400.



You are now ready to tile. Remember to protect the tray and drain if you are tiling the walls first.